

Comune di Cortona  
Provincia di Arezzo

Progetto di Cappella privata  
Cimitero di San Marco

Committenza

Ing. Sergio Mancini

Lavori Autorizzati con Permesso a Costruire  
ai sensi L. R. 1/05  
N. 155/11 del 06/08/2012  
A DIRIGENTE  
ING. MARCO BRUNI

Tavola

Data

Giugno 2011

Scala

Progetto

Aggiorn.

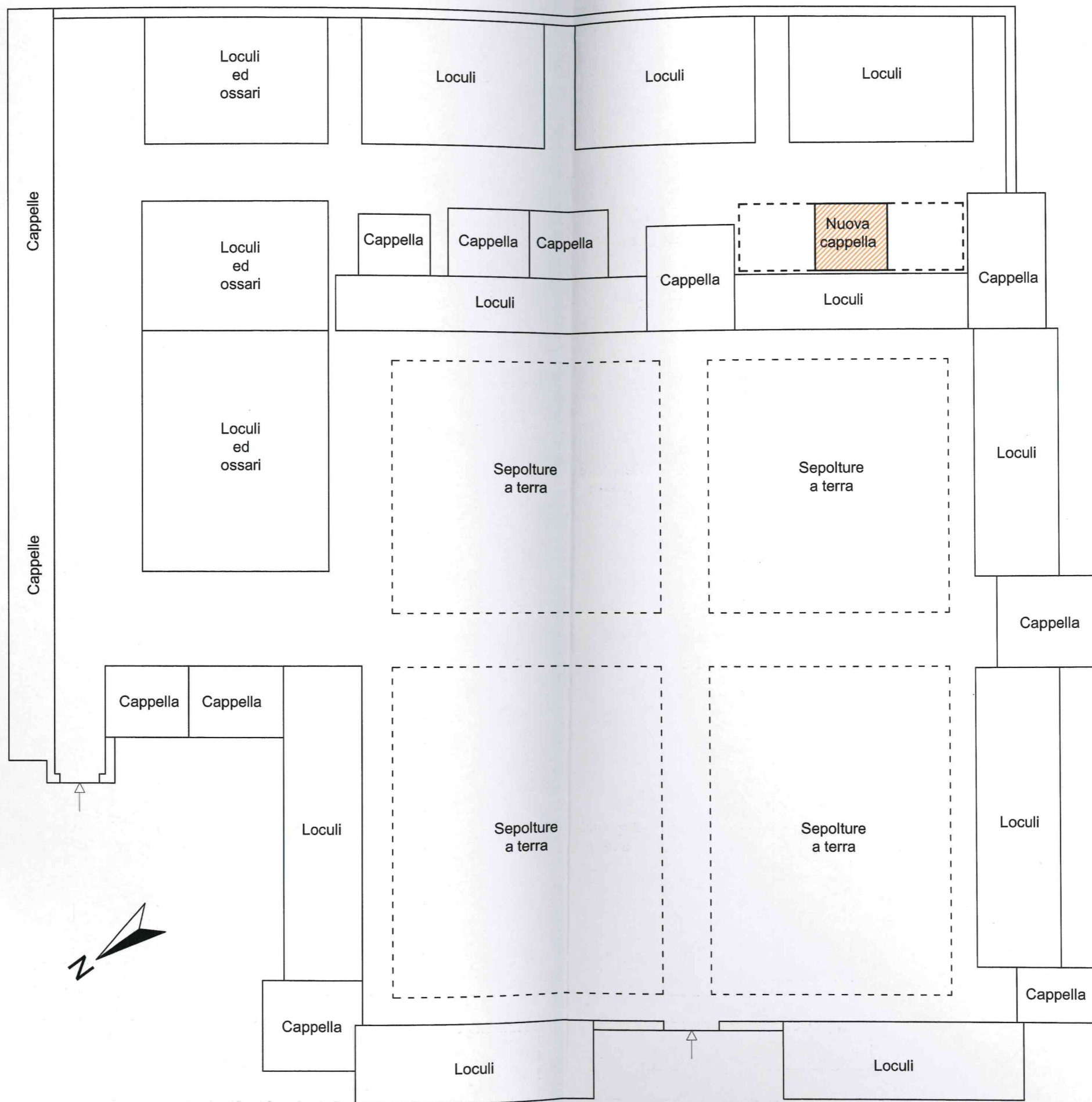
Varie



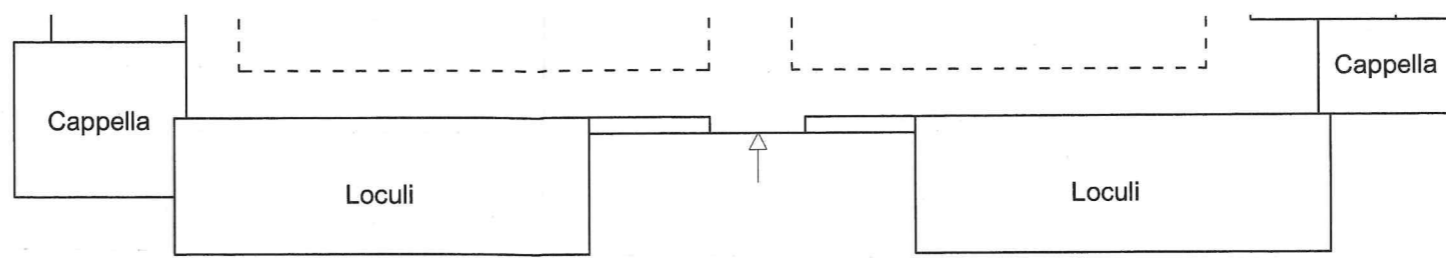
**MANCINI**  
Progettazione

viale Gramsci 81  
Camucia Cortona AR  
marco@imancini.com  
fax 0039 (0)575 604099  
mobile 0039 328 4828960

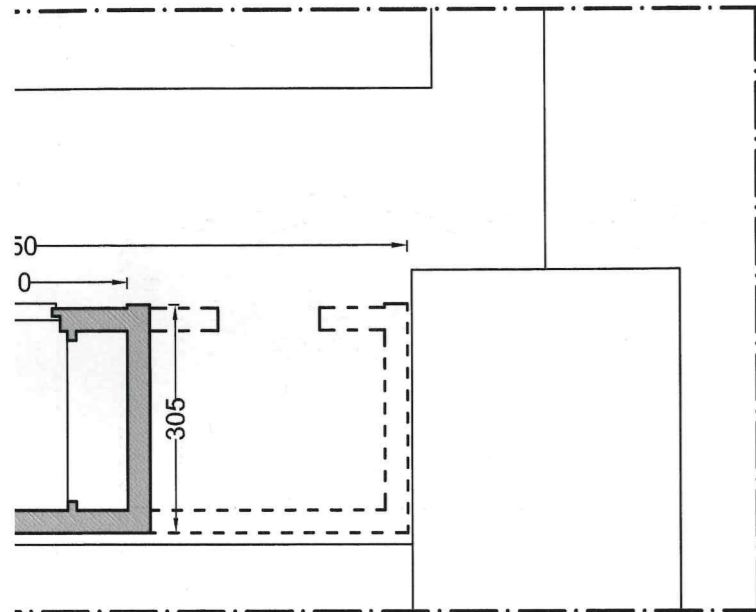
Architetto Marco Mancini



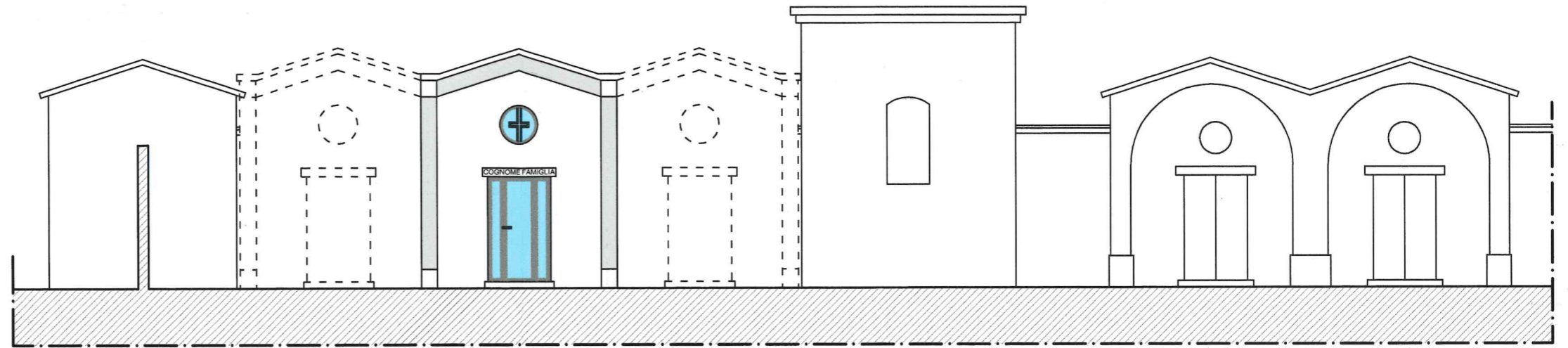
Planimetria generale  
scala 1:200



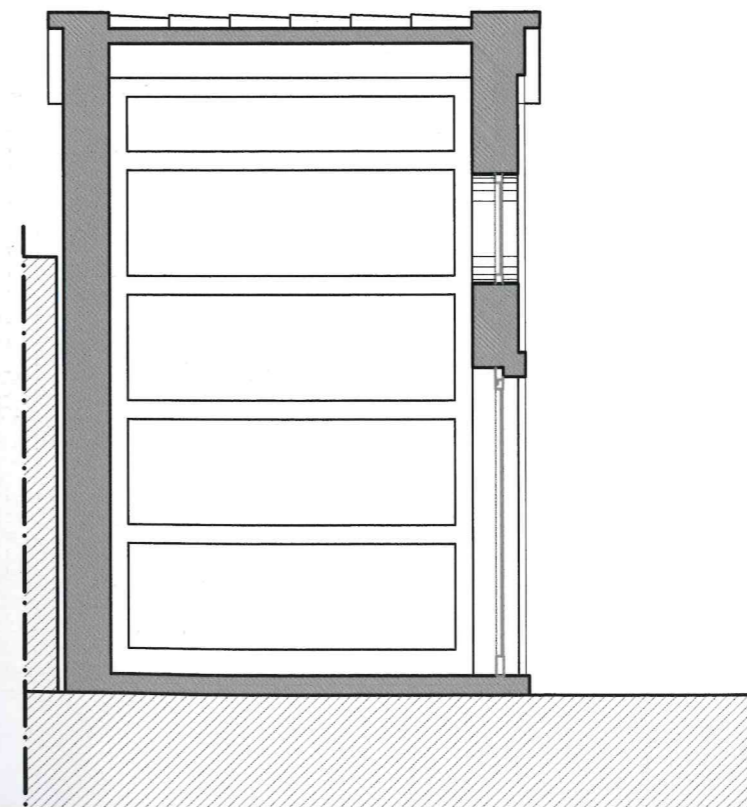
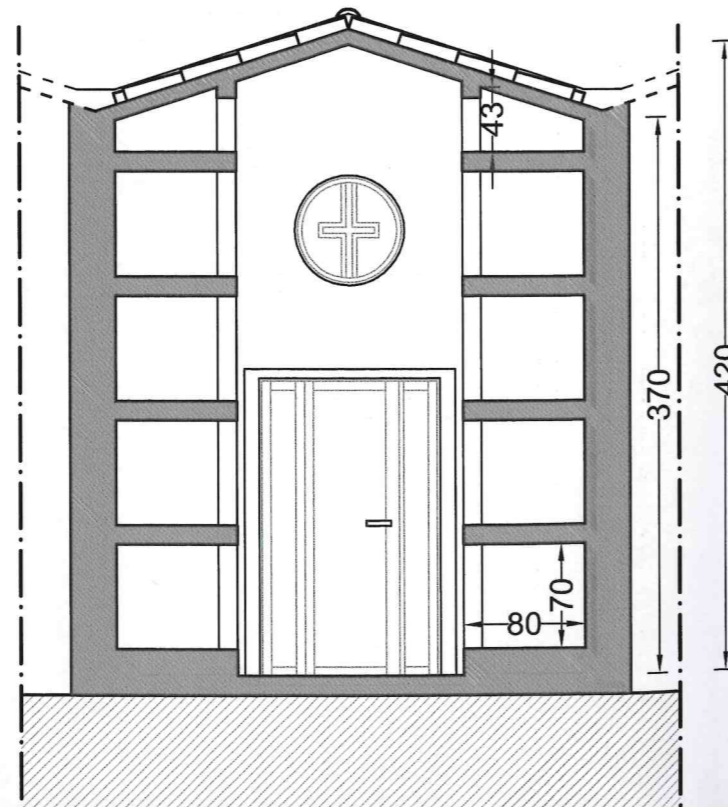
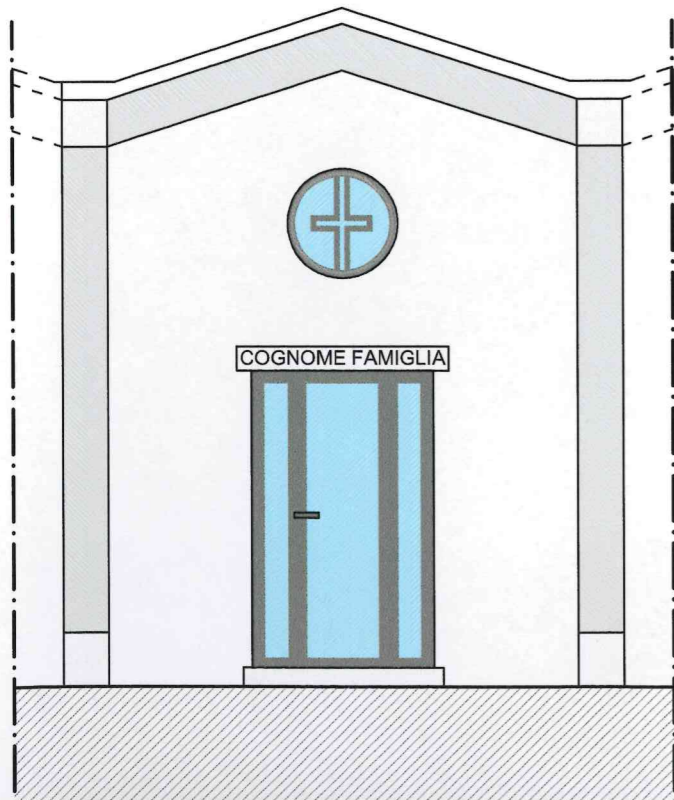
Planimetria generale  
scala 1:200



ta  
:100



Prospecto  
scala 1:100



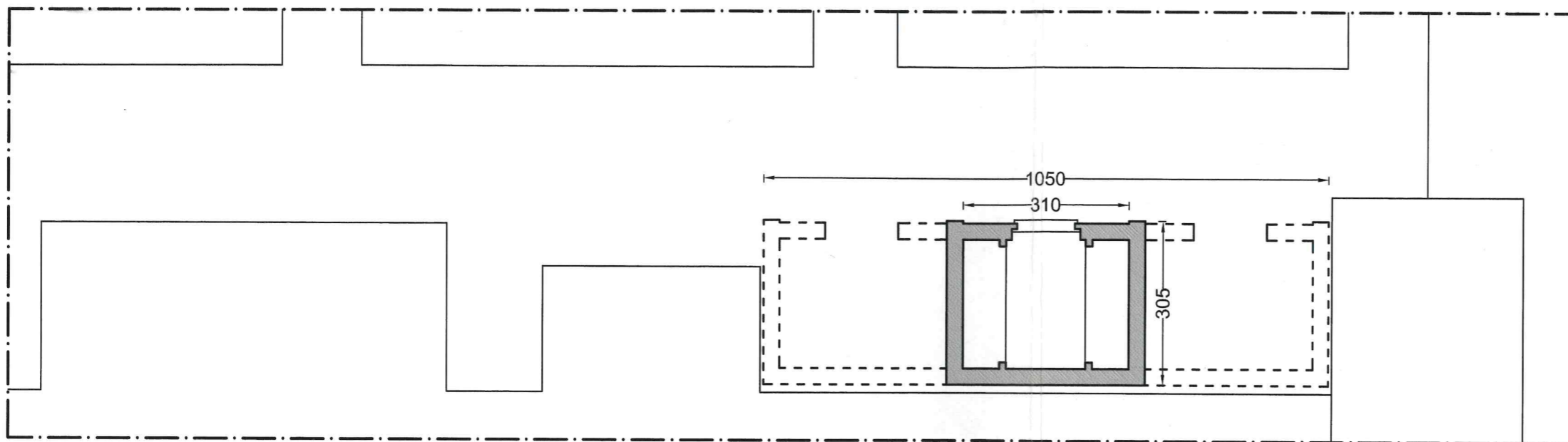
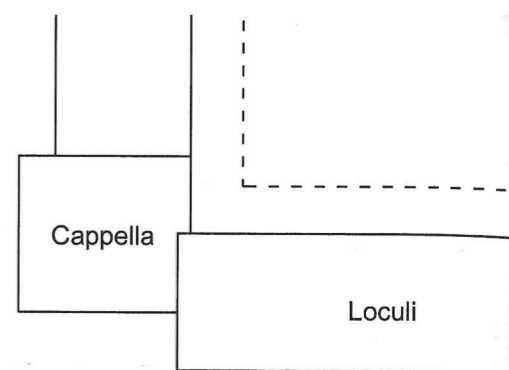




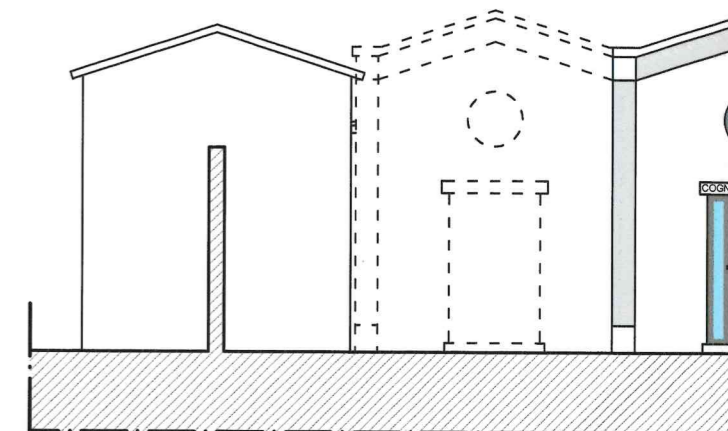
**MANCINI**  
Progettazione

viale Gramsci 81  
Camucia Cortona AR  
marco@imancini.com  
fax 0039 (0)575 604099  
mobile 0039 328 4828960

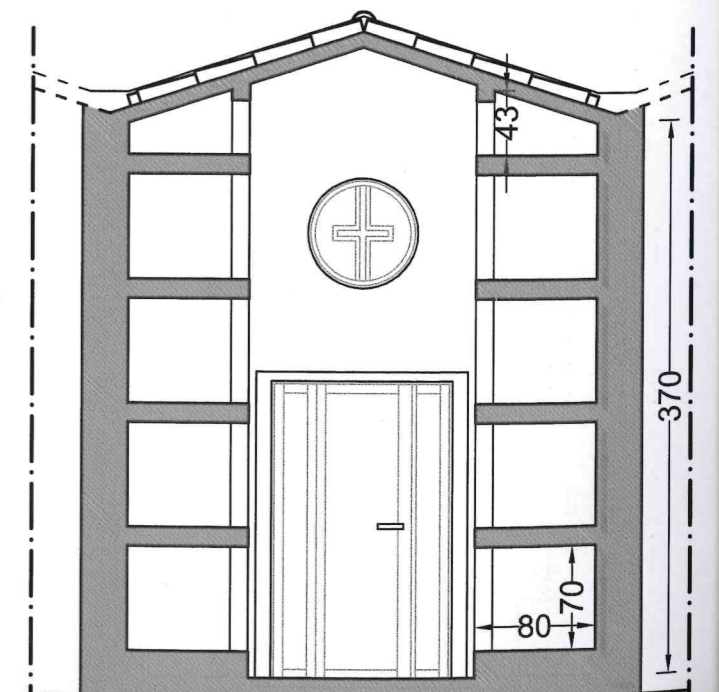
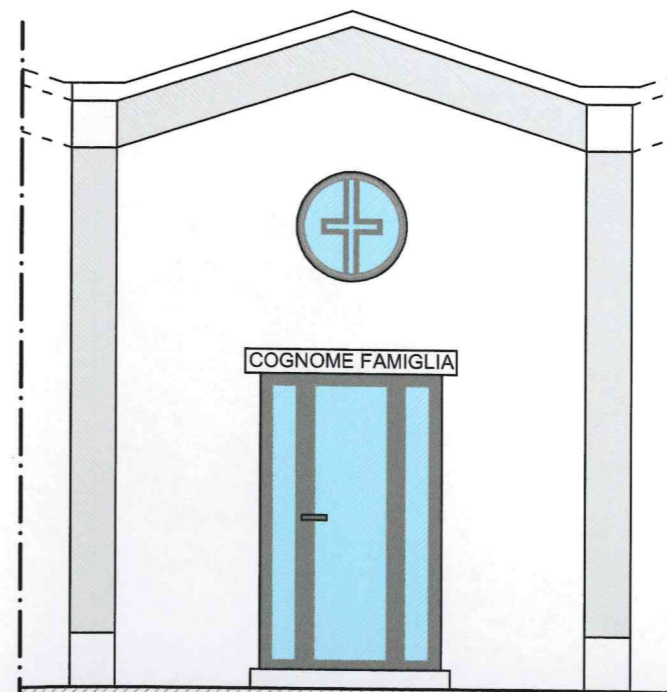
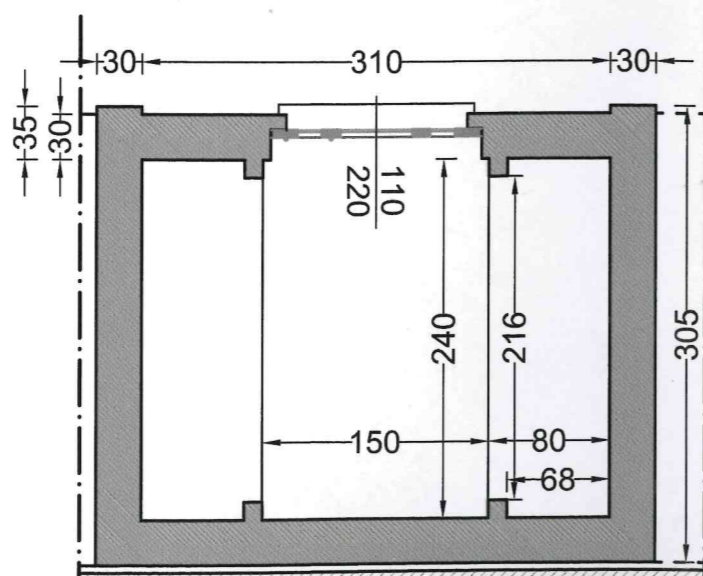
Architetto Marco Mancini



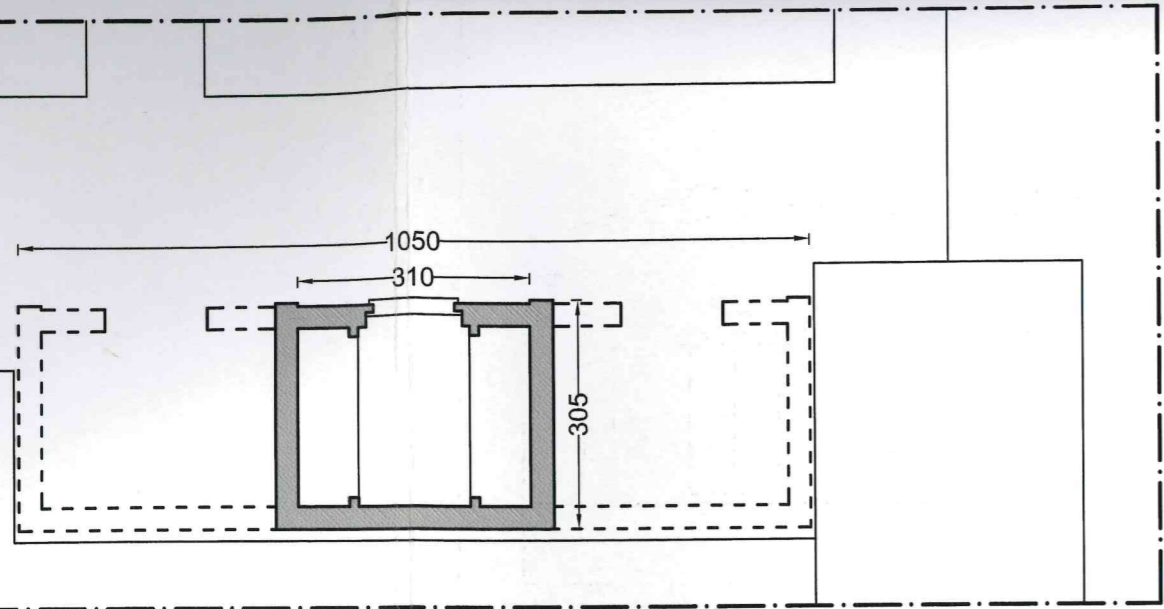
Pianta  
scala 1:100



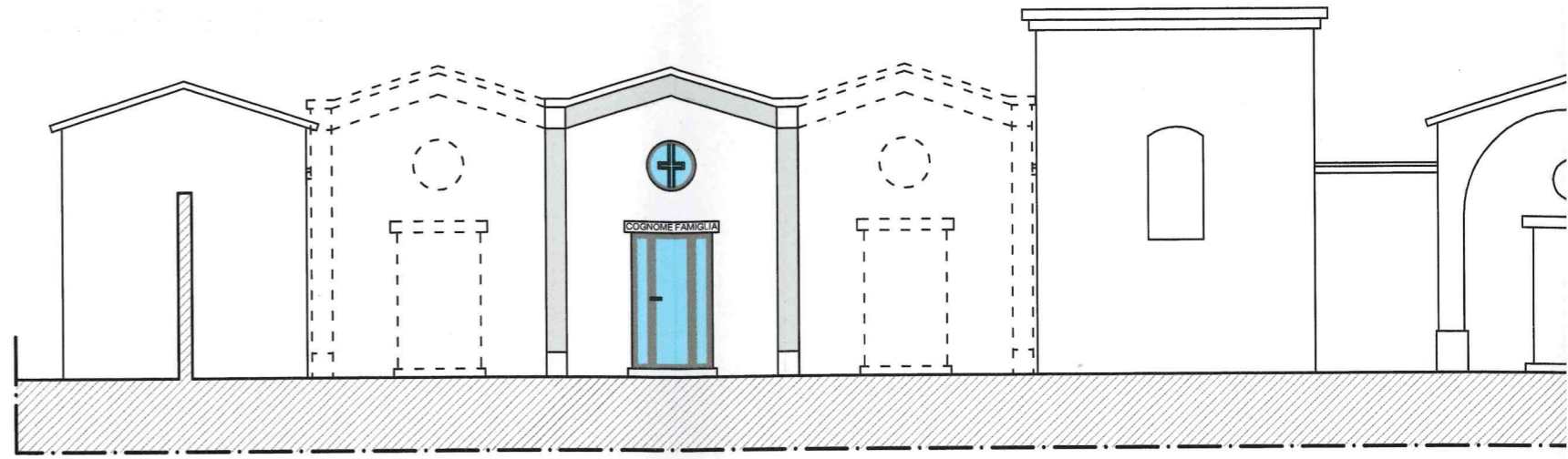
Proseccione  
scala



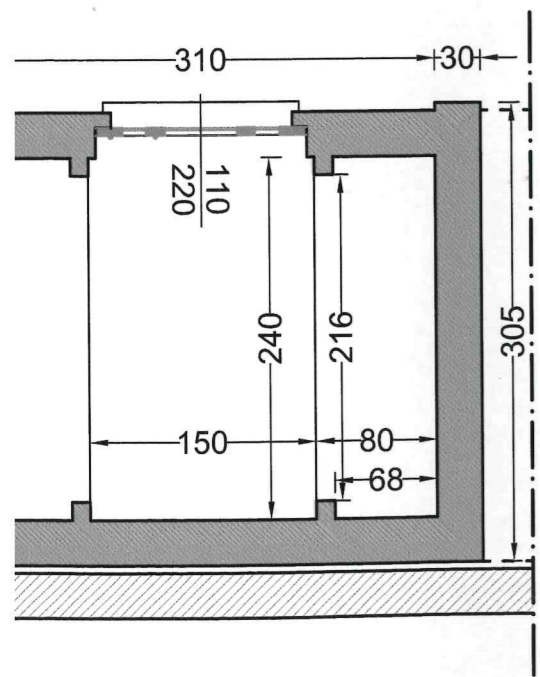




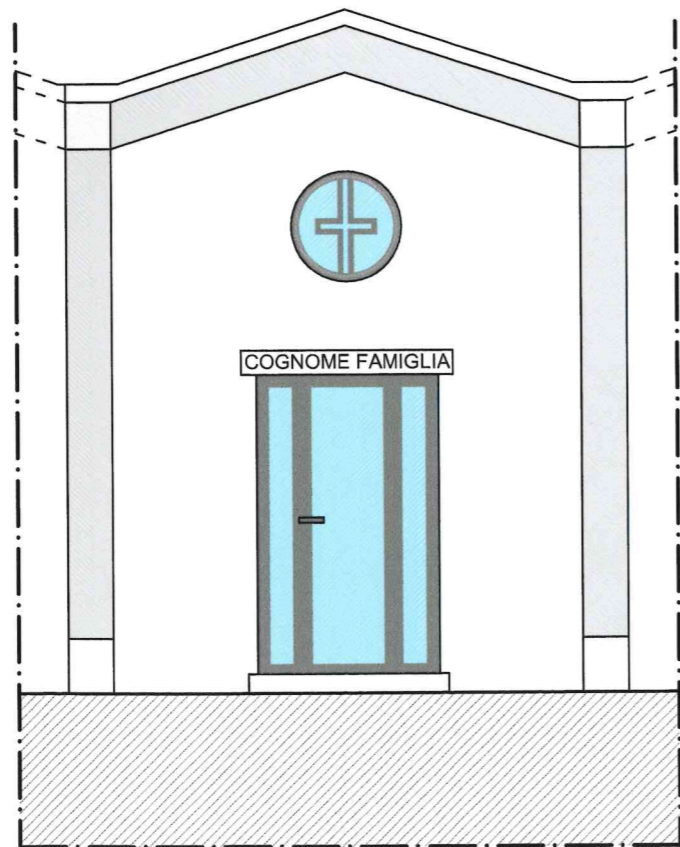
Pianta  
scala 1:100



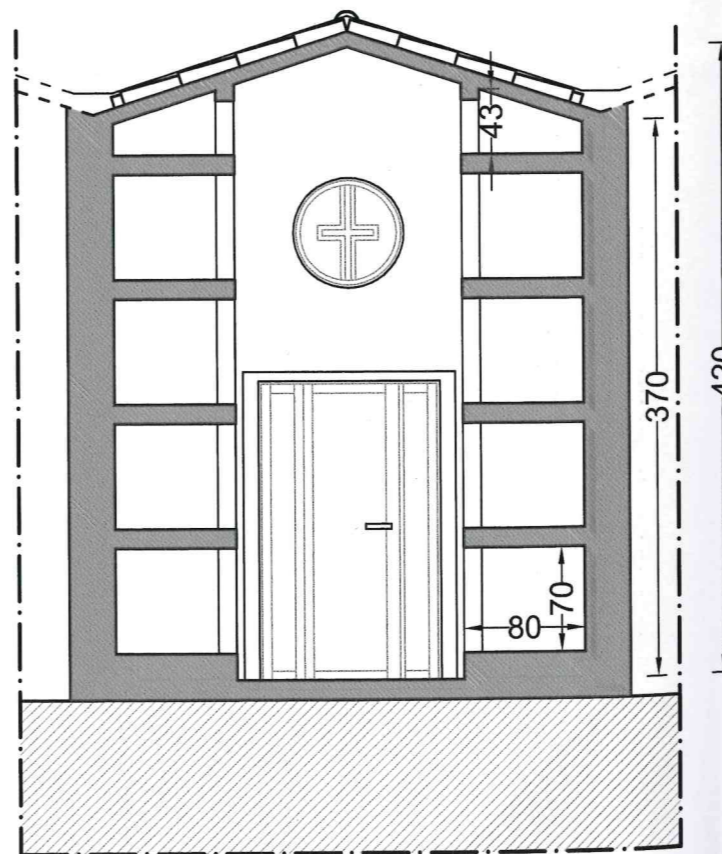
Prospetto  
scala 1:100



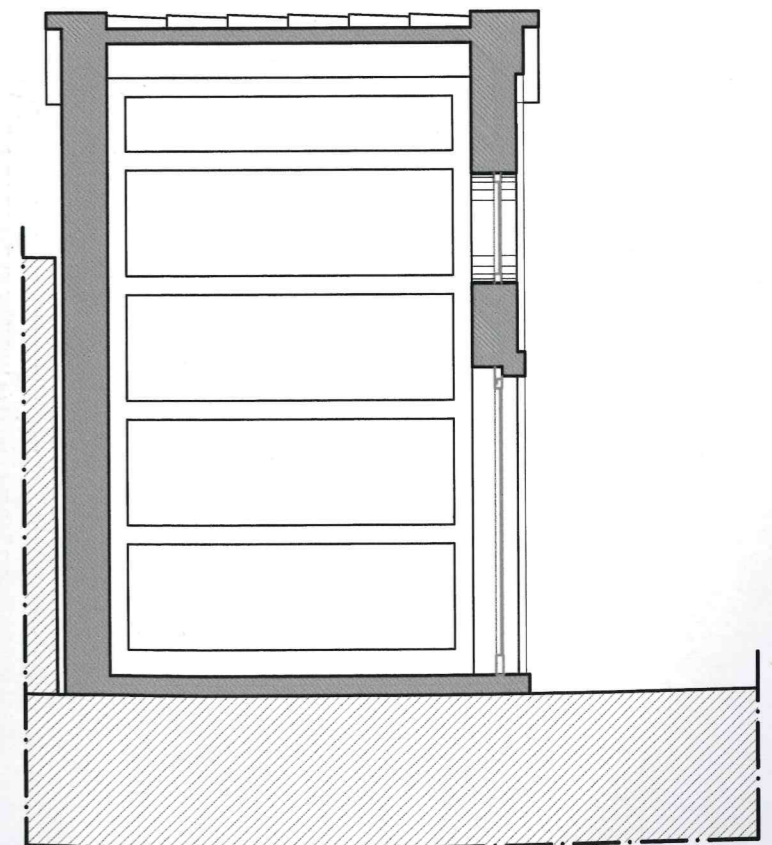
Pianta  
scala 1:50



Prospetto  
scala 1:50

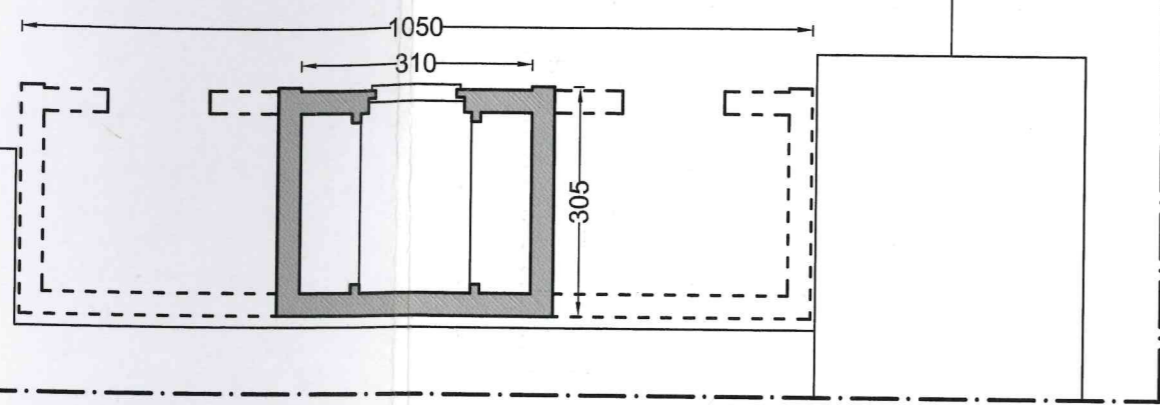


Sezione trasversale  
scala 1:50

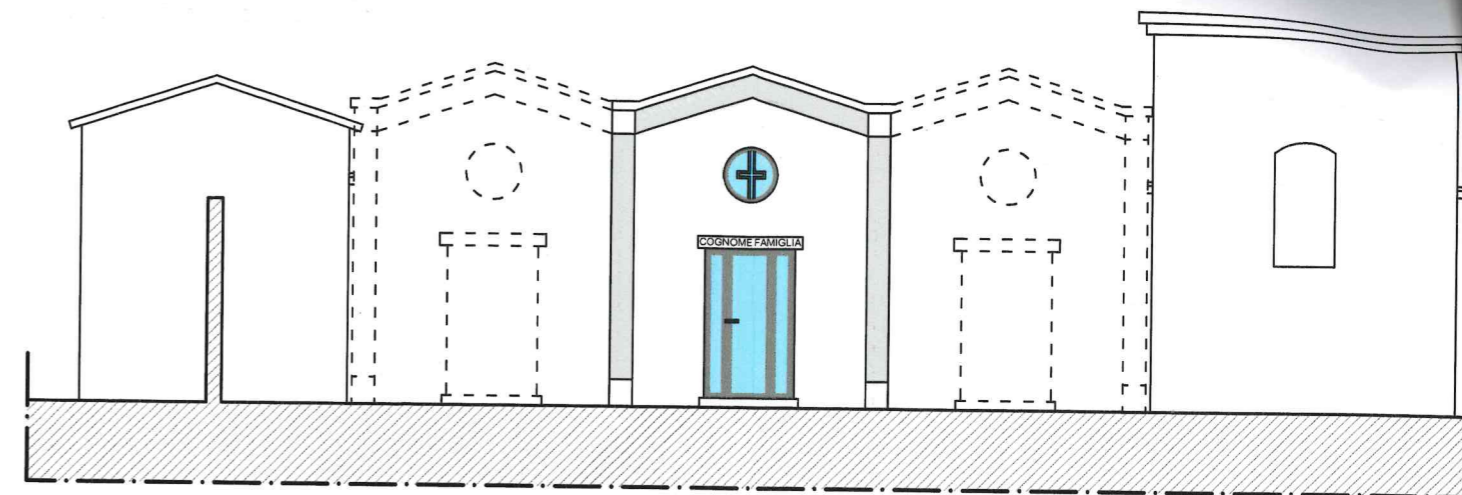


Sezione longitudinale  
scala 1:50

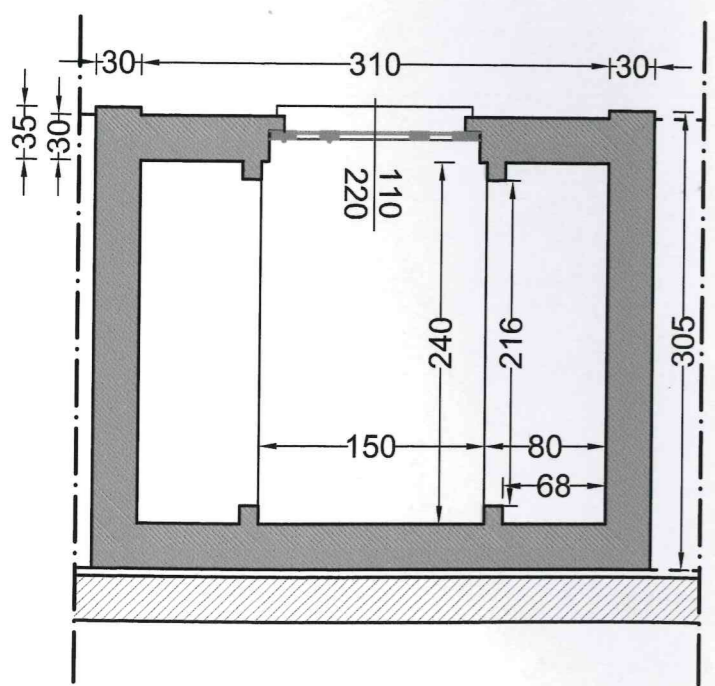




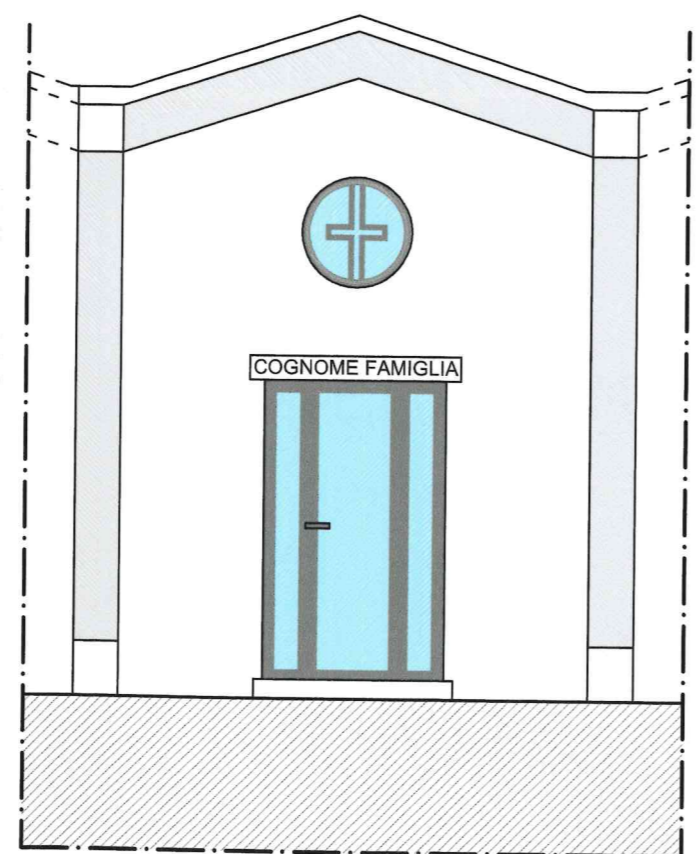
Pianta  
scala 1:100



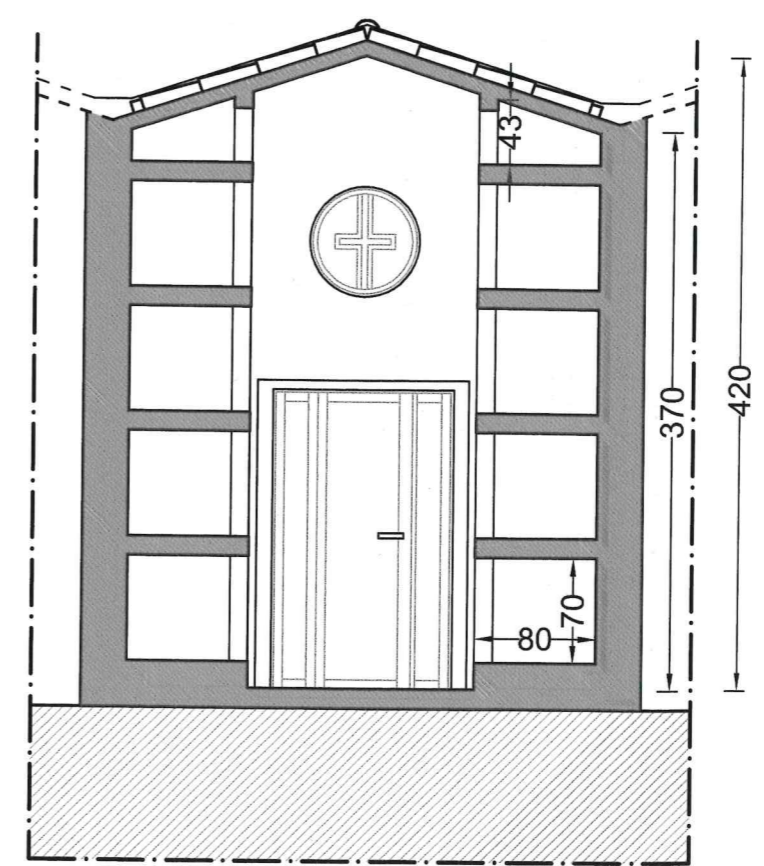
Prospetto  
scala 1:100



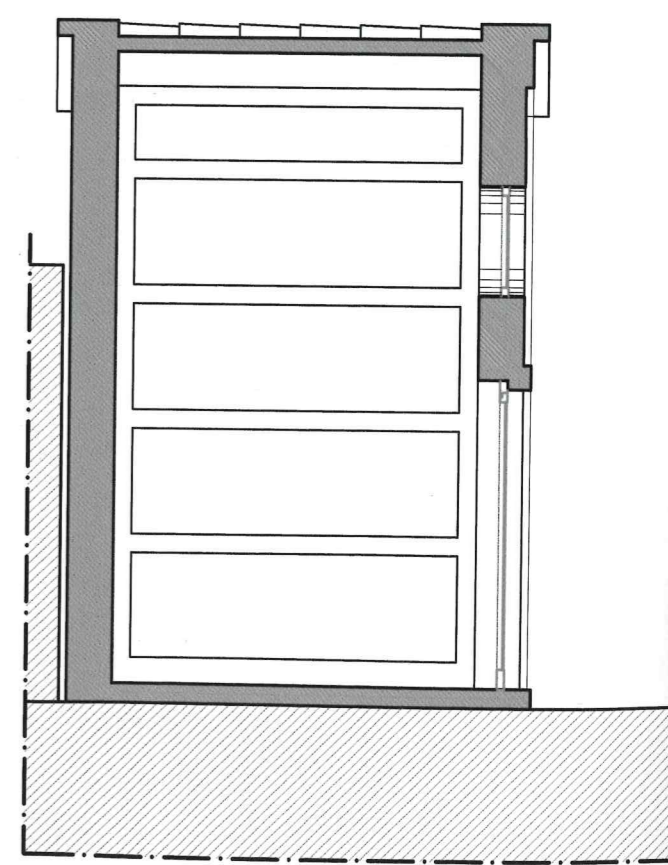
Pianta  
scala 1:50



Prospetto  
scala 1:50



Sezione trasversale  
scala 1:50



Sezione longitudinale  
scala 1:50